



The Washington State Registry now offers fully managed staffing services via SymmetryMSP

Clients deserve flexibility and choice. One size does not fit all. That's why The Washington State Registry and Symmetry Workforce Solutions have partnered to provide you with a fully customized MSP solution. You can pick and choose the service design that's right for your organization's specific culture, desired outcomes, business and financial goals. The technology, processes and delivery model can all be customized to meet your unique needs.

When you partner with The Washington State Registry and Symmetry, we deliver consolidated processes, standardization and automation for the full life-cycle of staffing procurement and a commitment to user satisfaction for our clients, clinicians and trusted supplier partners. In fact, the SymmetryMSP offers suppliers early payment options, immediate access to needs and Vendor Management System (VMS) technology designed and implemented to make it easier for them to fulfill your needs.

BENEFITS OF A SYMMETRY PARTNERSHIP



INCREASED VISIBILITY



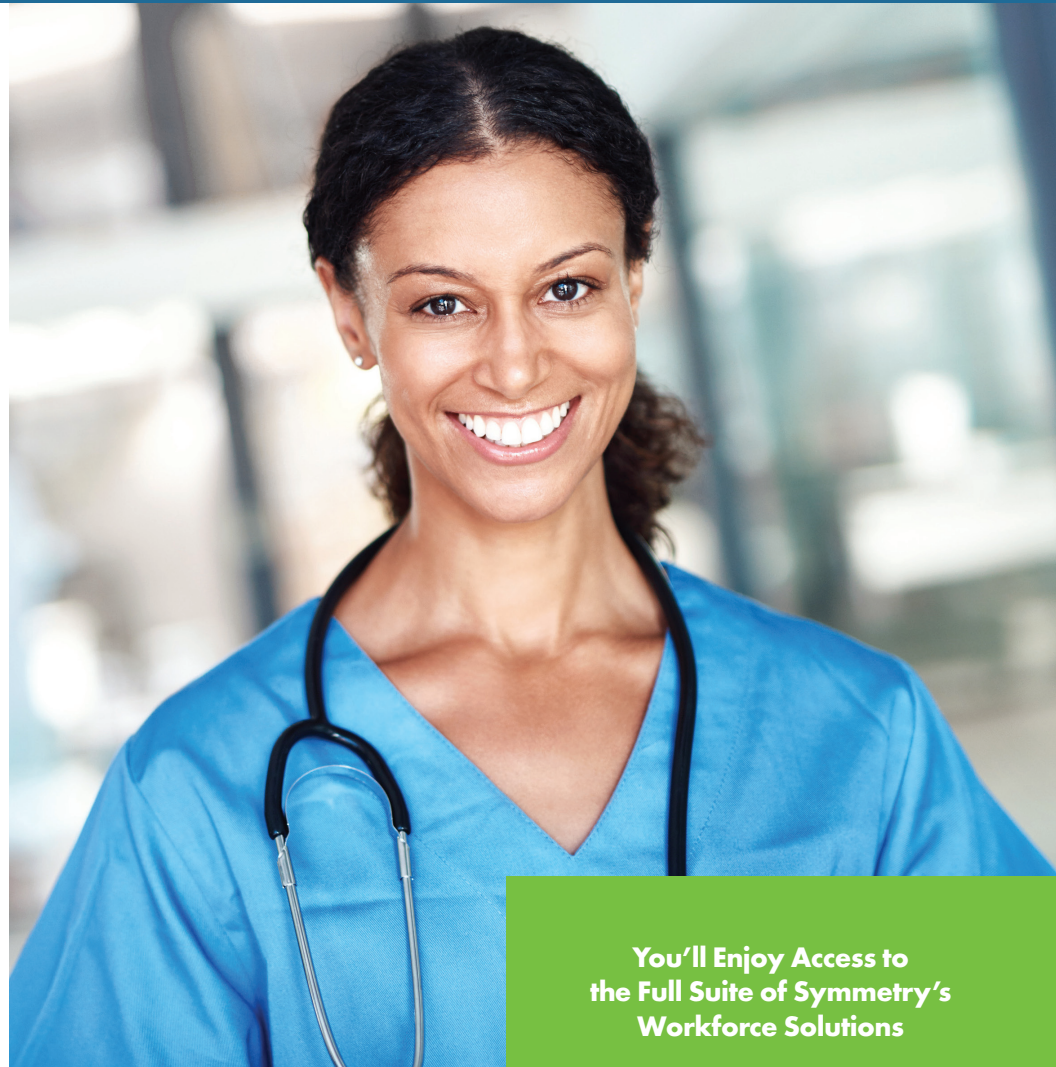
EASY-TO-USE TECHNOLOGY



EFFICIENCIES & SAVINGS



USER SATISFACTION



You'll Enjoy Access to the Full Suite of Symmetry's Workforce Solutions

Symmetry Healthcare Staffing

Fill all your travel RN, allied, per diem and EMR conversion needs with ease

Lotus Connect

The industry's easiest-to-use software, Lotus Connect, provides access to all staff documentation

Symmetry Clinical Services

Dynamic clinical support, including Symmetry Clinical Interviews, coaching and remediation

Symmetry Partner Network

Access to Symmetry's robust network of qualified suppliers

All Symmetry services and solutions create efficiencies, savings, risk management and improve quality. In a time of increased pressures for cost management, audits, compliance and satisfaction, we understand your needs. For more information on the Symmetry MSP visit symmetryMSP.com.

